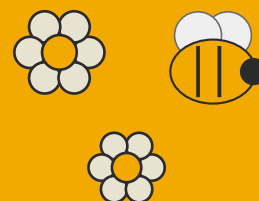


# Pop-Up Bee Garden

*Open the card and a whole meadow springs up - with a little bee that bounces over the flowers.*

A Little Bee Crafty printable project



## At a glance

<b>Age range</b>	5-10 (great for a grown-up + younger sibling team, too)
<b>Hands-on time</b>	About 30-45 minutes
<b>Skill level</b>	Easy-Medium (careful cutting + folding)
<b>Mess level</b>	Low (just paper scraps and a little glue)
<b>Adult supervision</b>	Some - an adult does the scissor-tip slits

This pop-up card is one of those crafts with a surprise hiding inside. It looks like a flat folded card - then you open it and three flowers stand straight up, while a paper-spring bee bobs and wobbles above the garden. Everything comes from one printed template sheet, so there is no tricky drawing. You cut, you fold on the dotted lines, you glue, and the pop-up does the rest. Make one as a card for someone, or a tiny stand-up scene for a windowsill.

**The trick:** two folded paper tabs glued inside the card push the flowers up when the card opens - and a flat paper strip, folded back and forth, becomes a springy bee.

# What you'll need

---

## Materials

- 1 printed Template Sheet (the second PDF), on white paper or thin card
- 1 sheet of card or stiff paper for the card base (8.5 x 11), any color
- Crayons, colored pencils, or markers to color the flowers and bee
- A glue stick (or white school glue)
- Optional: a small pom-pom or googly eyes to dress up the bee
- Optional: 1 sheet of scrap paper to practice the spring fold

## Tools

- Child-safe scissors
- A pencil
- A ruler (helps fold straight lines)
- A bone folder or the back of a spoon (for crisp folds)
- optional
- An adult with pointed scissors or a craft knife for the inside slits

### Safety first

The only sharp step is making two small slits inside the card so the pop-up tabs can poke through - a grown-up should do that part with pointed scissors or a craft knife, on a cutting mat or thick magazine. Kids do all the rest. Use a glue stick to keep little fingers tidy, and keep small extras like pom-poms away from children under 3 (choking).

### Before you print:

Print the Template Sheet at 100% / Actual Size (turn OFF 'Fit to page' or 'Scale to fit'). Then check the 1-inch box on the sheet with a ruler before cutting - if it measures 1 inch, every flower will be the right size.

# Let's make it

---

- 1 Print and check**

Print the Template Sheet at 100%. Measure the 1-inch box with your ruler to make sure it printed at the right size.
- 2 Color everything**

Color the 3 flowers, the leaves, and the bee right on the sheet. Press firmly so the colors show on stand-up pieces.
- 3 Cut out the pieces**

Cut along every SOLID line: the 3 flowers, the bee, and the bee's long spring strip. Cut on the lines, not inside them.
- 4 Make the card base**

Fold your sheet of card in half to make a card. Run a ruler along the fold to make it crisp. This is your garden's background.
- 5 Grown-up: cut the pop-up slits (grown-up step)**

Open the card flat. An ADULT cuts two short slits along the dashed slit marks on the Template Sheet's placement guide, on the card's center fold. (See the diagram.)
- 6 Fold the pop-up tabs**

Take each flower's bottom TAB and fold it forward on the dashed line, then back the other way, so it makes a little step that can stand up.

## Let's make it (continued)

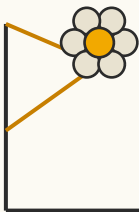
**7 Glue the flowers in**  
Slide each folded tab into a slit (or glue the tab flat just behind the fold). Glue the **BACK** half of each tab to the card. Close the card to test - the flowers should lie flat, then pop up when you open it.

**8 Build the bee spring**  
Take the long strip. Fold it back and forth like an accordion - over, under, over, under - all the way to the end. Let go and it springs!

**9 Attach the bee**  
Glue one end of the spring to the bee's belly, and the other end to the card behind the tallest flower. Now the bee bobs above the garden.

**10 Open and play**  
Open and close your card slowly. Watch the flowers rise and the bee wobble on its spring. Write a note inside if it's a card for someone!

### How the pop-up tab works



Card open: tab makes a step

1. Fold the tab **FORWARD** on the dashed line.
2. Fold it **BACK** again to make a little Z step.
3. Glue the back half flat to the card.
4. The flower glues to the front of the step, so it lies down when closed, stands when open.

# Make it yours

---

## > Tinier makers (ages 3-4)

Skip the spring and the slits. A grown-up pre-cuts the flowers; the child just colors and glues them standing up on a folded card. Still pops, way simpler.

## > A whole meadow

Print two sheets and crowd the card with 5-6 flowers at different heights. Add the extra butterfly and ladybug shapes on the template.

## > Night garden

Color everything dark, then dot the flower centers with a white gel pen or stickers for 'glowing' pollen. Add a paper moon behind the bee.

## > Real-pollinator card

Turn it into a thank-you card for a gardener or a 'Save the Bees' card. Write one true bee fact inside - like 'bees visit 100 flowers per trip.'

### The learning (quietly)

Pop-ups are sneaky little engineering lessons. Folding the tabs and watching them push the flowers up is a first taste of how a mechanism stores and releases movement - the same idea behind levers and hinges. The accordion-fold spring shows how flat paper becomes bouncy and springy just by changing its shape. Along the way, kids practice careful scissor control, folding on a line, and following a sequence of steps in order. And because the whole thing is a tiny bee garden, it's an easy doorway into talking about pollinators: why bees visit flowers, and why gardens full of blooms help them. Best of all - they made a thing that MOVES, which is its own quiet lesson in 'I can build that.'